

This cabinet is an extension to the PMC1 family, providing additional room to house equipment such as traffic ITS components.



Features

- Marine-grade aluminum construction
- Powder-coated ASA 61 Grey
- NEMA 3R rated
- Padlockable 3-point latch mechanism on door
- Door stays
- Slanted roof to repel rain, ice and snow
- Complete backpan
- Filtered louvers
- Adjustable pole mounting brackets
- All mounting hardware included

Specifications

- ETL certified to applicable CSA and UL standards
- MOTBC approved
- 1/8" marine-grade aluminum construction

Optional Components

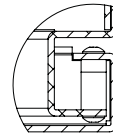
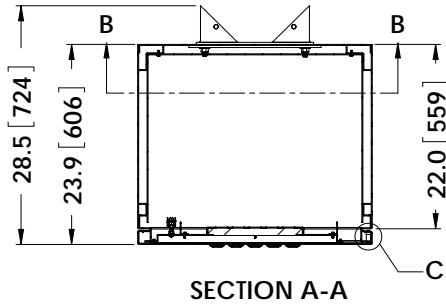
- Heater and thermostat
- Fan and thermostat
- Lights and door switch
- Styrofoam insulation
- Shelves
- Side panels
- Security handle cover
- Electrical controls/power distribution
- Pre-punched back pan
- Recessed handle
- Fold-down laptop tray
- Convenience receptacle
- Custom powder coat colours

Benefits

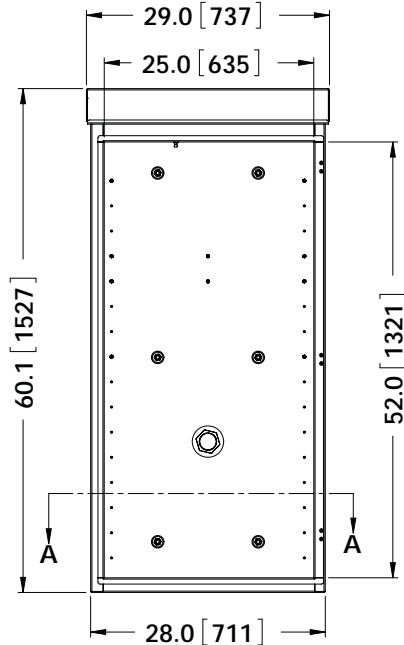
This cabinet is designed for electrical controls including overhead bridge signs, camera controls, cellular signs, traffic ITS and other communication control stations. This cabinet is usually powder coated ASA 61 Grey but additional colours are available.

The adjustable mounting bracket allows installation to any size pole.

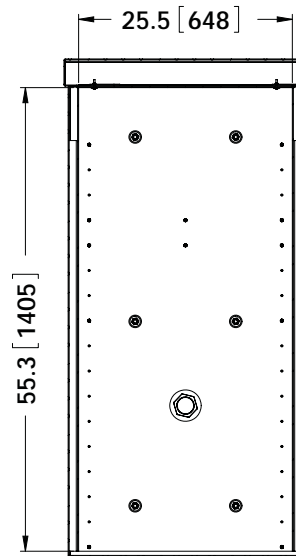




DETAIL B



FRONT VIEW
(DOOR REMOVED)



SECTION B-B
BACK PANEL DETAIL

PART NUMBER	HEIGHT	WIDTH	DEPTH	MATERIAL
PMC12A	60"	28"	22"	ALUMINUM

ADDITIONAL OPTIONS
HEATER AND THERMOSTAT
FAN AND THERMOSTAT
LIGHTS AND DOOR SWITCH
INSULATED
SIDE PANELS
SINGLE ADJUSTABLE SHELF
SIDE MOUNTS
FENCE MOUNT

CONSULT FACTORY FOR ALL OPTIONAL CONFIGURATIONS