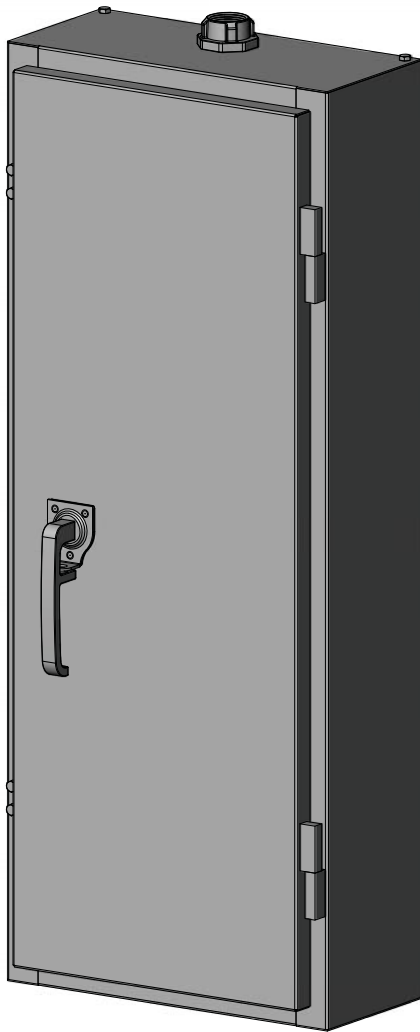


This 3 phase panel can be used on any steel pole for street lighting or power distribution. It is a specialty service panel that can be fed from a supply authority overhead or underground service.



Features

- 304 (#4) stainless steel construction
- Stainless steel padlockable 3-point latch mechanism on door
- NEMA 3R rated
- Service entrance rated
- 24/48 cct breaker panel
- Test switch
- Lighting contactor/controls compartment
- All mounting hardware included
- Reverse mountable

Specifications

- 120/208 VAC 3 phase
- 10,000 AIR
- ETL certified to applicable CSA and UL standards
- MOTBC approved
- 30 to 100 amp main breaker
- NEMA rated contactors when required

Optional Components

- Up to 4 lighting contactors
- Flasher controls
- Sub breakers as required
- Brackets for banding purposes
- Up to 22 kAIC rated breakers
- Snowplow debris shield
- IEC rated contactors
- Aluminum construction

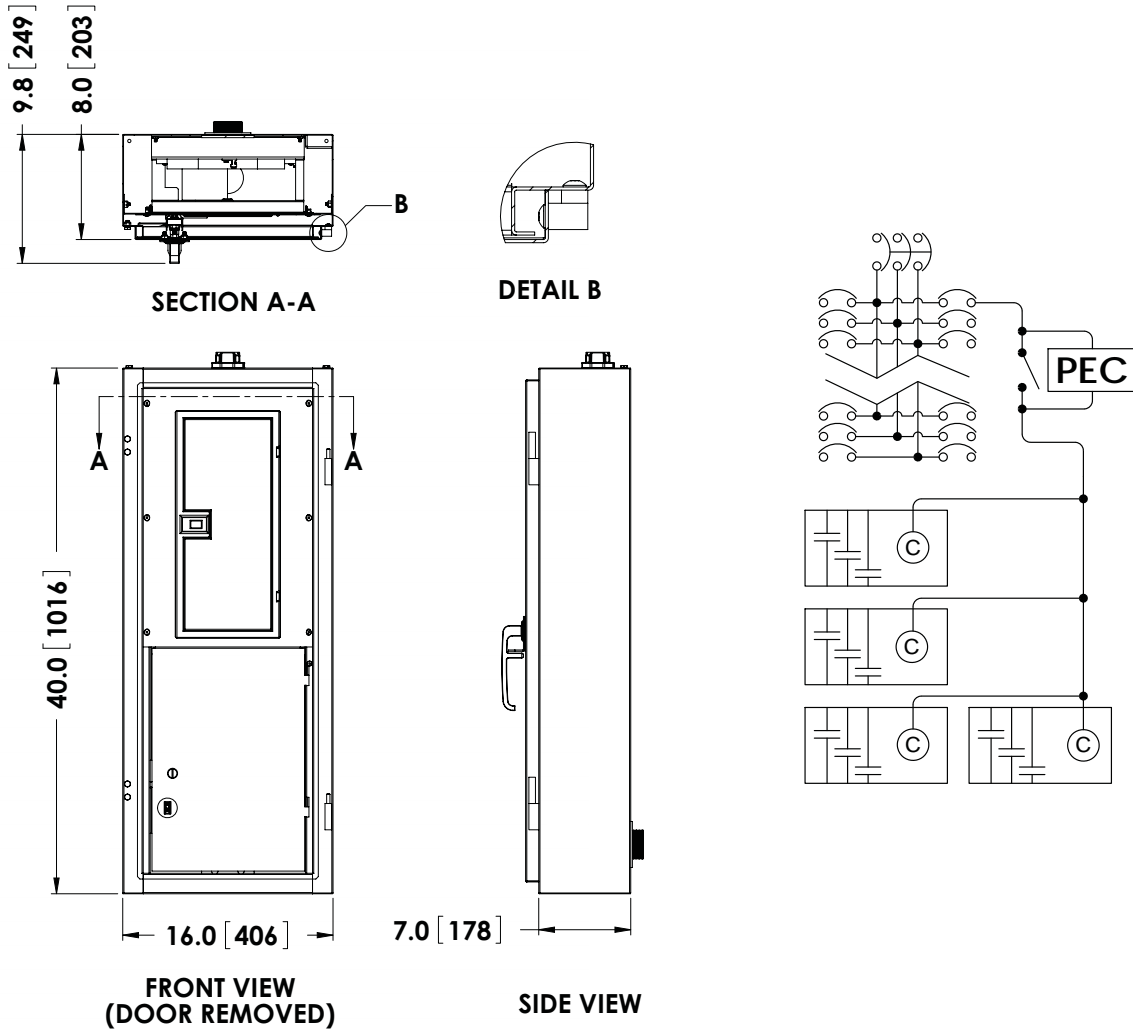
Benefits

All required equipment for power distribution and street lighting control is found in this practical pole mounted enclosure that is designed to control the breaker panel and a variety of control devices. The 24/48 3 phase breaker panel can be used to power a wide variety of common and specialty applications.

The controls compartment can house up to 4 contactors and has a threaded 2" pole access hole in the back to allow for easy connections to lighting or other devices on the pole. This cabinet can be mounted upside down for underground fed services. Included are the test switch, 2" chase nipple, 1 1/4" ground bushing, 1 1/4" mast hub, 1 1/4" offset nipple and all required stainless mounting hardware.

The test switch enables bypassing of the photocell to check for burnt out lamps.





PART NUMBER	HEIGHT	WIDTH	DEPTH	MATERIAL	MAIN BREAKER
HWYSP24-3-100-3S	40"	16"	8"	STAINLESS STEEL	30A
HWYSP24-3-100-6S	40"	16"	8"	STAINLESS STEEL	60A
HWYSP24-3-100-10S	40"	16"	8"	STAINLESS STEEL	100A

ADDITIONAL OPTIONS
CROSSWALK FLASHER
WARNING BOARD FLASHER
LIGHTING CONTACTOR (QTY 1)
LIGHTING CONTACTOR (QTY 2)
LIGHTING CONTACTOR (QTY 3)
LIGHTING CONTACTOR (QTY 4)

CONSULT FACTORY FOR ALL OPTIONAL CONFIGURATIONS